



Catherine Farish

The Persimmon Prints

Seven years ago there was a knock on my studio door. Two Japanese women had arrived unannounced. They had been told that I worked with Japanese paper.

There was paper scattered everywhere around my studio. One of the women started to laugh when she caught sight of my boxes of paper scraps. She thought it hilarious that I kept these torn pieces. The women examined the scraps intently, rubbing them between their fingers, pressing them against their cheeks, even smelling the paper. They took photographs and left.

A year later, I received a package from Japan containing sheets of exquisite handmade paper. The colours were different tones of a dye made from the persimmon fruit. Included was a note from the two women who, unknown to me, were papermakers. They had been impressed by my carefully guarded bits of Japanese paper and had assumed it was difficult to find. It was their gift that inspired the Persimmon Prints of this exhibition.

The works presented here involve a combination of techniques. Textures on found metal plates are worked and then printed on this naturally dyed paper. The resulting prints are then combined in multi-layered collages and mounted on Arches paper to form unique pieces or, in some cases, limited editions.

C. Farish

Cover

Persimmon Print 4 (detail)

Opposite

Persimmon Print 3

unique print, 2001

24 x 55 inches

Catherine Farish

The Persimmon Prints



s p h e r i s

20 Bond Street, New York City March 20 – April 16, 2002
Main Street, Walpole, New Hampshire March 16 – April 19, 2002

www.spherisgallery.com

Persimmon Print 5
unique print, 2001
36 x 58 inches



Opposite
Yellow Print 1
limited edition print, 2002
18 x 23 inches

This page: detail



Small Persimmon Print 4
unique print, 2002
18 x 10 inches



Small Persimmon Print 2
unique print, 2002
18 x 14 inches

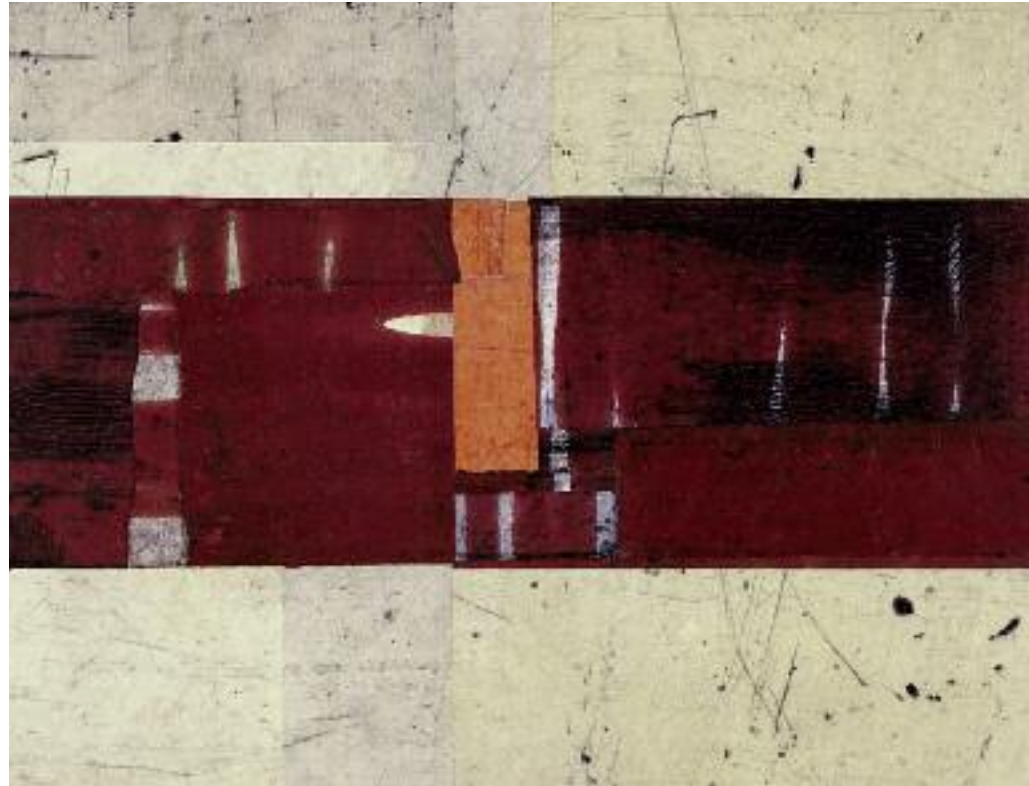


Persimmon Print 6
unique print, 2001
36 x 63 inche

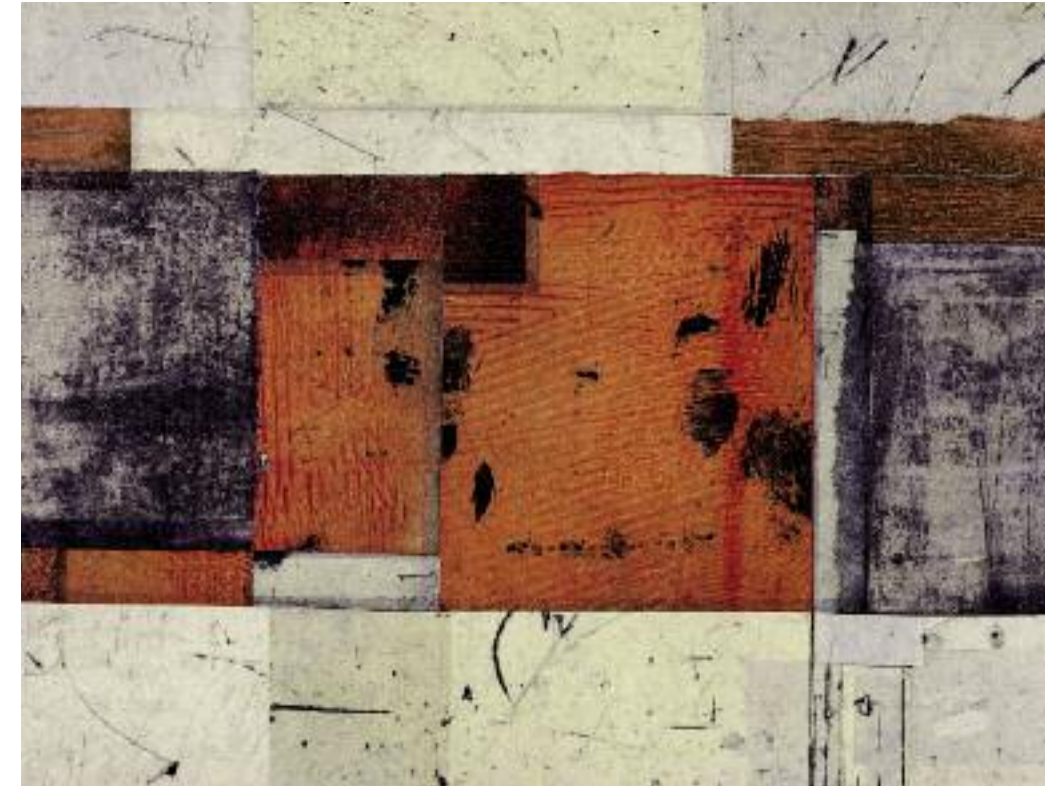


Persimmon Print 4
unique print, 2001
30 x 57 inches





Small Persimmon Print 1
unique print, 2002
15 x 19 inches



Small Persimmon Print 3
unique print, 2002
15 x 20 inches

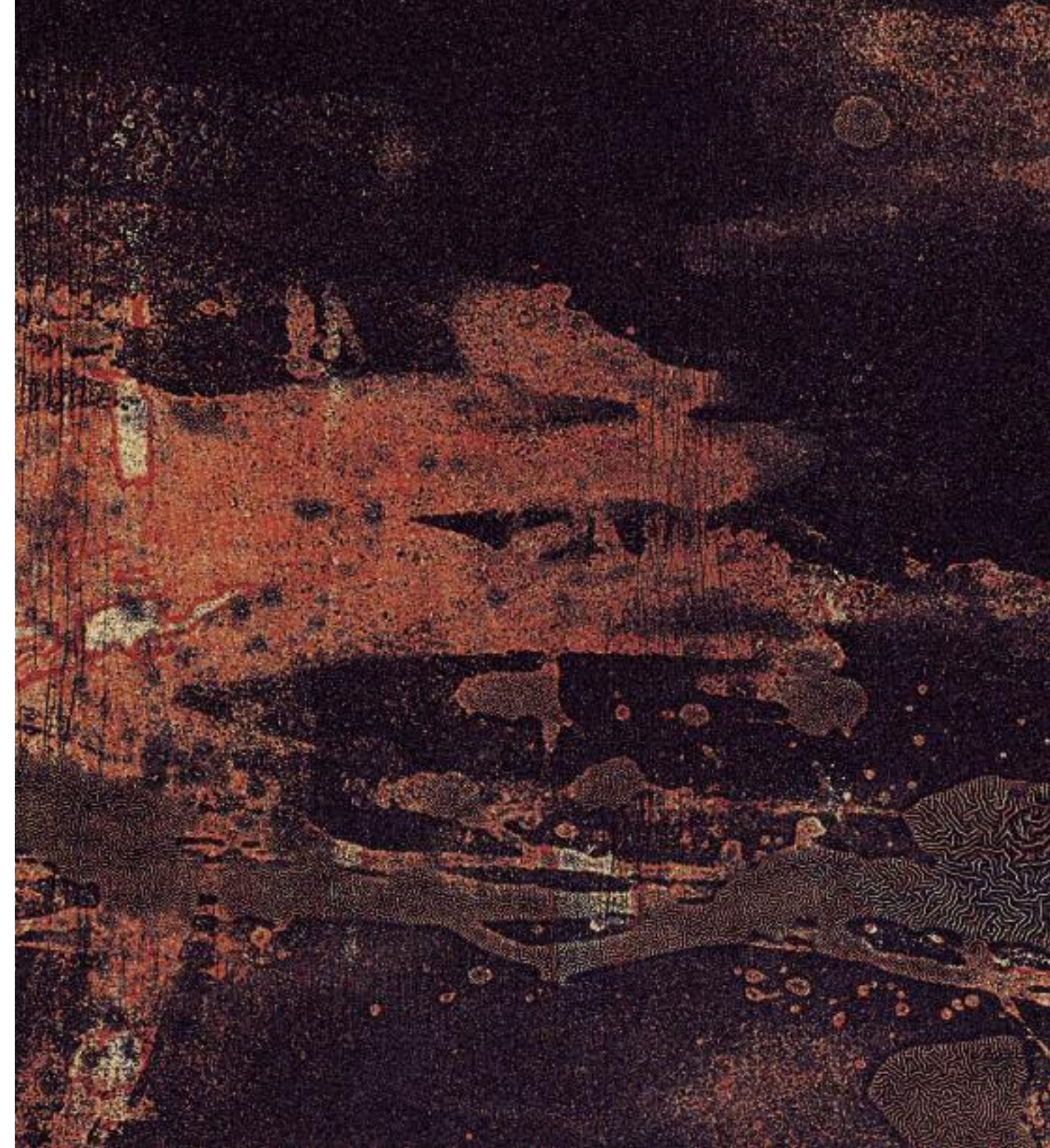
Persimmon Print 1
unique print, 2001
25 x 55 inches





Opposite
Persimmon Print 2
limited edition print, 2001
21 x 45 inches

This page: detail





Red Print
limited edition print, 2002
17 x 25 inches



Yellow Print 2
limited edition print, 2002
17 x 25 inches

Catherine Farish

Born in London, England, 1951. Lives and works in Montréal, Québec.

EDUCATION

- 1986 Studies in printmaking with master printer F-X Marange, Atelier Circulaire, Montréal
- 1983 Bachelor of Fine Arts, cum laude, Concordia University, Montréal
- 1976 Diploma of Fine Arts, Montréal Museum School of Art and Design

SELECTED EXHIBITIONS

- 2002 *The Persimmon Prints*, Spheris Gallery, New York, NY
The Persimmon Prints, Spheris Gallery, Walpole, NH
American Rivers Museum Exhibition
Galerie Broutta, Paris
Canada Art Bank, 30th Anniversary Exhibition, Ottawa, Ontario
La figuration 1980–2000, Trois-Rivières, Québec
- 2001 *Dépaysement*, Galerie Simon Blais, Montréal
Studio 21, Halifax, Nova Scotia
3rd Biennial Print Exhibition in Île de France, Versailles, France
- 2000 Spheris Gallery, New York, NY
7th Amadora International Biennial, Amadora, Portugal
Pass-art, Rouyn-Noranda, Québec
- 1999 Galerie le Sphinx, Montauban, France
Galerie Passerelle du Blavet, Hennebont, France
Spheris Gallery, Walpole, NH
SAGA Work on Paper Show, Paris
New Art Barcelona '99, Barcelona
- 1998 Galerie Winance, Tournai, Belgium
Galerie Echancre, Brussels, Belgium
Trace 1998, Paris
Québec, la belle Amérique, Mairie des Lilas, Paris
Art Gallery of Ontario, Toronto
Bibliothèque national du Québec, Montréal

- 1997 *Primo Pensiero*, Galerie Simon Blais, Montréal
Boston Printmakers 50th Anniversary Exhibition, Boston, MA
Le même et la différence, Taipei Museum, Taiwan
Gravures Québécoises Rhonalpins, Lyons, France
The Levee: Where the Blues Began, United States, Canada, Japan, South Africa, Korea
- 1996 *Maps*, Galerie Atelier Circulaire, Montréal
Hope Corman Gallery, Victoria, British Columbia
Galerie l'Autre Équivoque, Ottawa, Ontario
Franco-Canadian Exchange, L'Urdla, Lyons, France
IV Fiesta de la Cultura Iberoamericana, Holguin, Cuba
Acquisitions 1995, Musée du Québec
- 1995 Galeriwan, Kuala Lumpur, Malaysia
Volte-face, Plein Sud, Longueuil, Québec
Open Studio, Toronto
Expo ARTE, Guadalajara, Mexico
Librairie du Québec à Paris
Drawing, Printing & Paper Biennale of Québec, Alma, Québec
- 1994 *Salisbury Plain*, Galerie Simon Blais, Montréal
Soleils de cuivre, Château de Reviere, France
Spanish & American Printmakers, La Coruna, Spain

COLLECTIONS

Asilah Forum Foundation, Bank of Montréal, Banque Nationale, Bibliothèque nationale du Québec, Canada Council Art Bank, City of Montréal, Commerzbank, Desjardins d'Oeuvres d'Art, Deloitte & Touche, Domtar, Ernst and Young, Loto-Québec, Musée du Québec, Pfizer Inc., Swiss Re Financial, Vanguard

Spheris Gallery

Post Office Box 788

Main Street

Walpole, New Hamsphire 03608

603.756.9617

20 Bond Street, #5

New York, New York 10012

917.328.3801

www.spherisgallery.com

Copyright © 2002 Spheris Gallery and Catherine Farish

Spheris Gallery Publications 02.02

PHOTOGRAPHY: Daniel Roussel

CATALOGUE TEMPLATE: Davidson Design, Inc.

DESIGN & PRE-PRESS PRODUCTION: Jeremy Eberts

PRINTING: Integria, Montréal, Québec, Canada